

Population

1. Size and growth

Size and growth

There are 55.984 persons living in Greenland (by January 1st 2015). This has been the size of the population +/- 1000 persons during the past 20 years. From 2005 the population started a slow declining tendency, which is expected to continue in the coming years.

Summary table 1.1. Population by place of birth

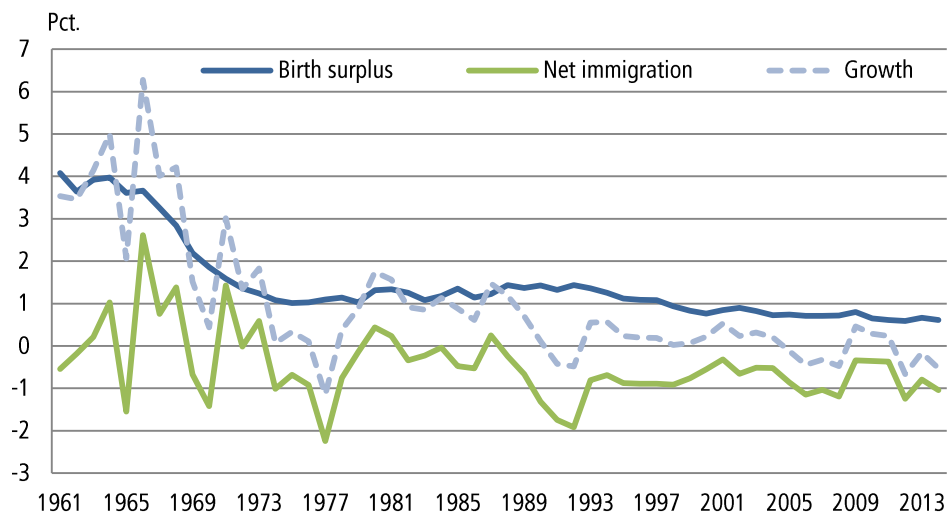
	1980	1985	1990	1995	2000	2005	2010	2015
Total	49.647	52.791	55.403	55.732	56.110	56.972	56.452	55.984
Greenland	40.959	43.602	46.151	48.412	49.358	50.275	50.226	49.975
Outside Greenland	8.688	9.189	9.252	7.320	6.752	6.697	6.226	6.009

Source: Statistics Greenland, <http://bank.stat.gl/beest1>

The size of the population and growth over time is explained by changes in the number of live birth, deaths, immigrants and emigrant. In figure 1.1 you can see the interaction between growth, birth surplus and net migration. Typically the birth surplus and net emigration contributes to a positive growth.

In figure 1.1 population growth, birth surplus and net emigrations is shown. Throughout the whole period there has been a stable birth surplus and volatile migrations.

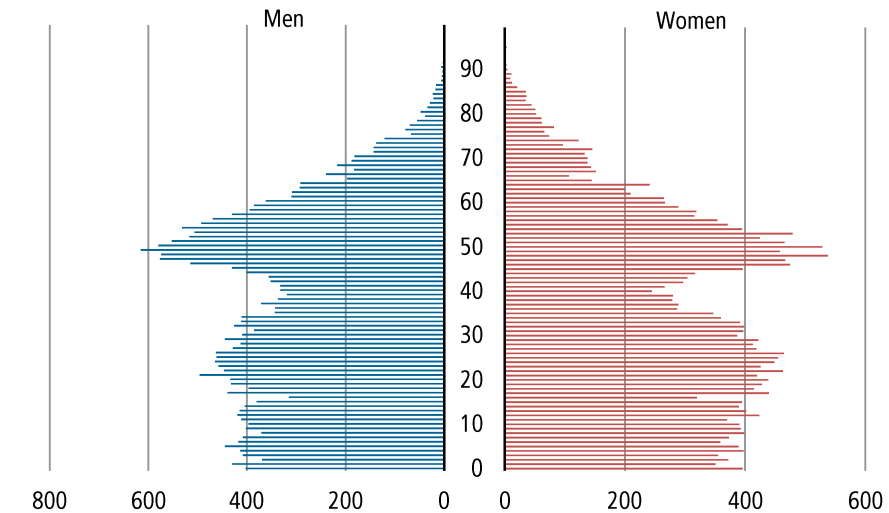
Figure 1.1. Population growth, birth surplus and net emigrations. Total population



Source: Statistics Greenland, <http://bank.stat.gl/beesat1>

The birth surplus was extremely high in the early 1960s due to a very high fertility level. Within a few years the fertility level was halved, and the birth cohorts was equally halved. We talk of ‘the big cohorts’ from the 1960s. These cohorts were twice as big as cohorts 10 years prior and after. The age-distribution over the past 50 years has been heavily influenced by these cohorts, and is still very visual in a population pyramid. In 2015 the cohorts are between 45 and 55 years old – and in ten years they will be about to retire.

Figure 1.2. Population pyramid 2015. Total population



Source: Statistics Greenland, <http://bank.stat.gl/beest1>

2. Structure

Gender, age and marital status

Summary table 2.1. Population by gender 1980-2015

	1980	1985	1990	1995	2000	2005	2010	2015
Total	49.785	52.955	55.567	55.732	56.110	56.972	56.452	55.984
Male	27.028	28.778	30.063	29.706	29.982	30.322	29.936	29.556
Female	22.757	24.177	25.504	26.026	26.128	26.650	26.516	26.428
	procent							
Male	54,3	54,3	54,1	53,3	53,4	53,2	53,0	52,8
Female	45,7	45,7	45,9	46,7	46,6	46,8	47,0	47,2

Source: Statistics Greenland <http://bank.stat.gl/beest1>

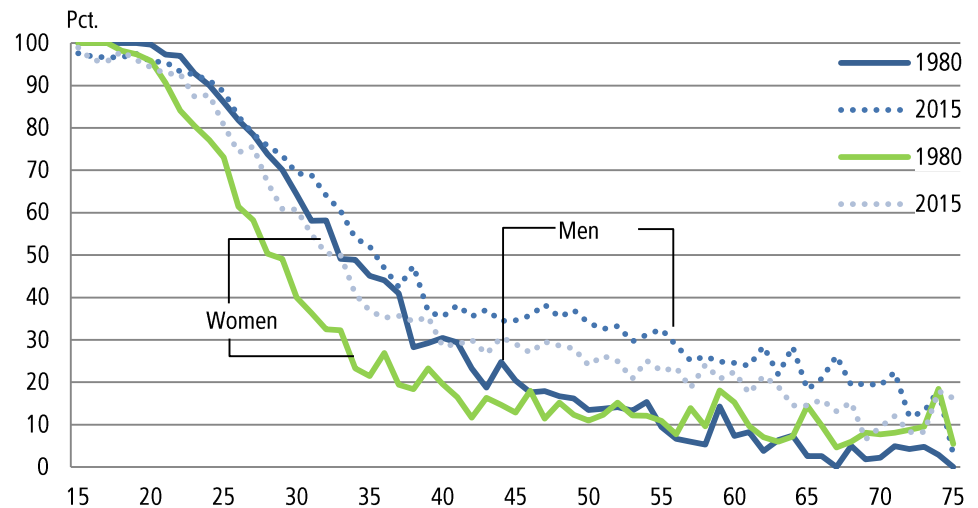
There are more males than females living in Greenland as 53 percent of total population are males. Generally there is a surplus of men in the working ages. Only in the oldest age groups women outnumber men. This is primary due to a group of men, born outside Greenland. This group, attracted by work, consist of double as many men as women.

The Greenlandic population is young. 7,4 percent of the population is over 65 years and less than 1 percent has turned 80 years.

The dependency ratio shows the ratio between people out of the working ages and the number of people in the active ages.

When setting the working ages to 20-64 years, the 'dependency ratio' by January 1st 2015 is calculated to 0.56. This mean, that for every 100 persons in the working ages, 56 persons, needs support. A view back in time shows, that the 'dependency ratio' in 1979 was 0.89, that is a much higher ratio than today. Ever since the mid 1990s the ratio has been around 65 per 100 in work. This, by the way, is pretty close to the world average when the working ages are counted as 15- 64 years. (see World Population Data Sheet Population Reference Bureau - www.prb.org)

Figure 2.1. Ratio of never married, born i n Greenland by age and gender 1980 and 2015



Source: Statistics Greenland, <http://bank.stat.gl/beest5>

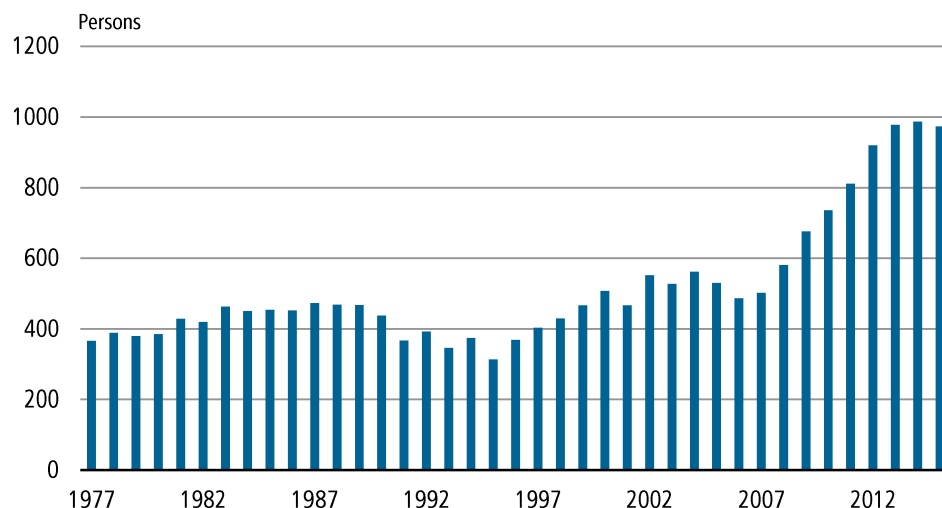
shows that over the past 30 years it has become more common to stay unmarried. This is even more outspoken for men than women.

3. Place of birth and citizenship

Place of birth and citizenship

Until a few years ago less than 1 percent of the population had foreign citizenship. As can be seen in figure 3.1 this is changing and only in the last 5 years the number of foreign citizens has risen by 33 percent.

Figure 3.1. Foreign citizens. 1977-2015



Source: Statistics Greenland, <http://bank.stat.gl/beest6>

We often split the population by birthplace with the categories 'born in Greenland' and 'born outside Greenland' as average considerations otherwise will hide important demographic differences between the groups. At the same time the proportion of people born outside Greenland has decreased from 18 percent in 1980 to 10,7 percent in 2015.

In summary table 3.1 the population has been tabulated by persons own 'place of birth' as well as parents 'place of birth'. From the table it is seen that 49,975 or 89,3 percent of the population was born in Greenland.

Summary table 3.1. Population by own and parents place of birth. 2015

Place of birth	Total	Both parents birthplace			One parent born in Greenland/ Second parent	
		Greenland	Outside		Greenland	unknown
			Greenland	unknown		
Total	55.984	34.838	731	10.809	9.314	292
Greenland	49.975	34.374	324	6.530	8.642	105
Outside Greenland	6.009	464	407	4.279	672	187

Source: Statistics Greenland, <http://bank.stat.gl/beeaa03>

In summary table 3.1 the population additionally has been calculated by the parents birthplace. It is seen, that 44.444 (34.374 + 9.314+292) equal to 79 percent of the population has at least one parent born in Greenland. Our archives do not hold information on the parents birthplace for 1/4 of the population. This is either because the parents can't be found in CPR (Danish register on persons), or because they live outside Denmark or Greenland or because they died prior to 1967, when the system was introduced.

Summary table 3.2. Population with strong family ties to Greenland. 2015

Place of birth	Total	Both parents birthplace		One parent born in Greenland
		Greenland	Unknown	Second parent born outside Greenland
Total	50.974	34.838	6.530	9.606
Greenland	49.651	34.374	6.530	8.747
Outside Greenland	1.323	464	-	859

Source: Statistics Greenland

If at least one parent was born in Greenland, the person is said to have strong family ties to Greenland. This includes the persons, where both parents' birthplaces are unknown, if the person in question was born in Greenland. With this definition 50,974 persons has strong family ties to Greenland by 2015. This represents 90 percent of the total population. There is almost no difference in the proportion of people who have strong family ties (91 percent) compared to the proportion of persons born in Greenland (89 percent).

4. Towns and Settlements

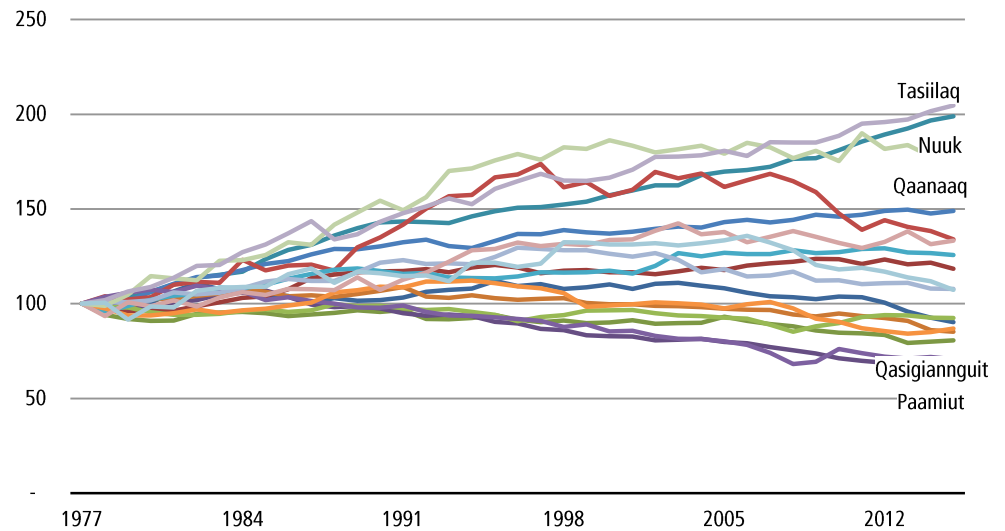
Towns and Settlements

According to Asiaqs' register of localities there are 89 active localities in Greenland by October 16th 2015. A locality can be a town(17), a settlement (54), farm(5), station(5).

Until the municipal amalgamation January 1st 2009, there was only one city in each municipality, in which municipal administration was found. Following the merger of municipalities we call the old municipalities for districts. A municipality consists of several towns and settlements.

Through the 1960s the population grew rapidly in the towns. The towns absorbed both population growth and the exodus from the settlements. This trend continued over the last 30 years as the population in towns continues to rise while it declines in the settlements. Figure 4.1 shows total population in the towns 1979-2014. The towns in Nuuk and Qaanaaq have almost doubled their population during the period, while the population in Paamiut and Qasigianguit has been reduced by 25 percent.

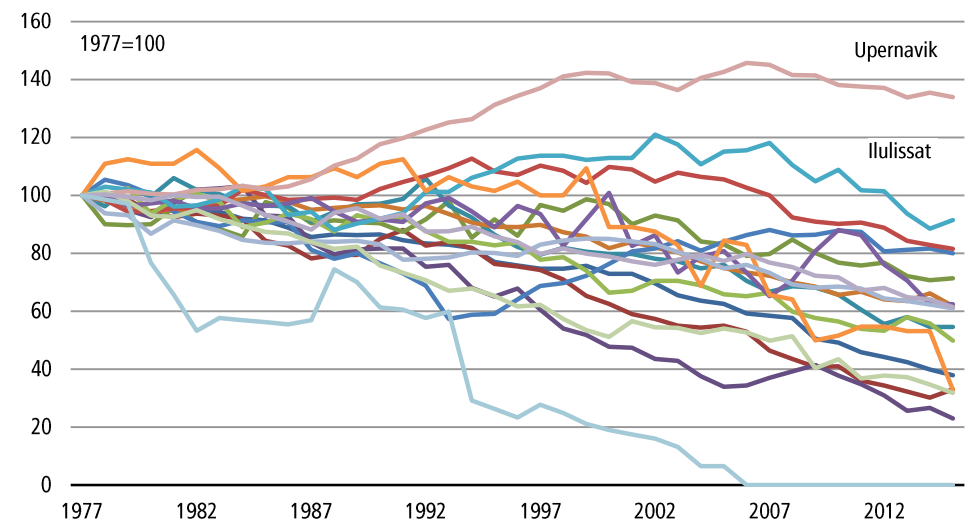
Figure 4.1. Population trends in towns 1977-2015



Source: Statistics Greenland, <http://bank.stat.gl/beest3>

Only the settlements in Upernavik and Ilulissat has experienced an increasing population. A number of settlements have been abandoned – partly or totally.

Figure 4.2. Population trends in settlements 1977-2015



Source: Statistics Greenland, <http://bank.stat.gl/beest3>

5. Vital statistics

Fertility

806 live born children were born in Greenland in 2014. Of these 738 were born by mothers born in Greenland themselves, and 68 were born by mothers from abroad.

The annual number of live born can be decomposed into the size of the female population, their age-distribution and their age-specific fertility rates. Fertility often compares by a number of indicators, some shown in summary table 5.1.

Summary table 5.1. Fertility indicators 2014

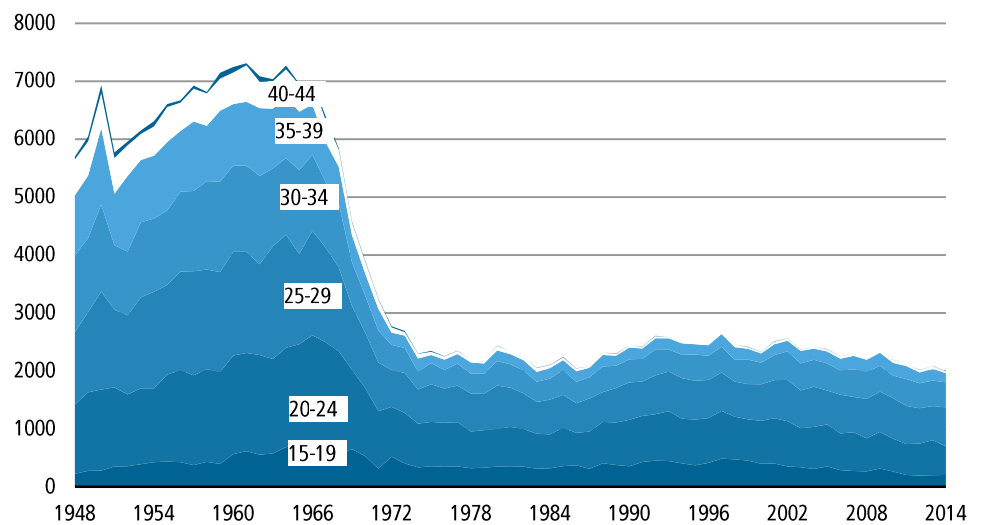
	Total			Mothers born in Greenland			Born outside Greenland		
	1994	2004	2014	1994	2004	2014	1994	2004	2014
Liveborn	1,139	892	806	1,025	809	738	114	83	68
Fertilityrate	20,5	15,7	14,4	21,3	16,1	14,7	15,5	12,3	11,2
General fertility	80,2	61,8	58,9	81,2	61,8	59,3	72,6	61,5	54,3
Total fertility	2,536	2,422	1,995	2,543	2,455	1,998	2,478	1,861	1,571
Gross reproduction	1,235	1,179	0,971	1,239	1,195	0,973	1,207	0,906	0,765
Net reproduction	1,157	1,138	0,943

Source: Statistics Greenland, <http://bank.stat.gl/beebbsf2>

The fertility-indicators give an overview of fertility and the age-specific fertility rates a more detailed picture. In figure 5.1 development in the age-specific rates are shown for women, born in Greenland.

The fertility level dropped very sharply in the late 1960s and early 1970s. From 1975 till today, the total fertility rate (the number of children a woman would get if she gives birth in accordance with the annual fertility rates) fluctuated between approximately 2.0 and 2.6 children.

Figure 5.1. Total fertility 1948-2014, per 1000 women born in Greenland



Source: Statistics Greenland, <http://bank.stat.gl/beebbsf1>

Over the last 10 years a decline in fertility for women under 25 years can be seen. The total fertility rate is now so low that the population can not reproduce itself.

6. Mortality

Mortality

In summary table 6.1. the main mortality indicators for 2012 – 2014 can be found. 464 persons died in 2014.

Life expectancy at 0-year equals how old a newborn child can expect to be with the death rates that exist in the different age groups in a given period. Life expectancy for persons born in Greenland has risen by 11.7 years for males and 6.2 years for women in the period from 1977-1981 to 2010-2014.

Summary table 6.1. Mortality indicators

	Total			Males			Females		
	2012	2013	2014	2012	2013	2014	2012	2013	2014
Deaths	459	450	464	270	270	240	189	180	224
Non natural deaths ¹
Mortality rate	8,2	8,0	8,3	9,1	9,1	8,1	7,2	6,8	8,5
Life expectancy ²	68,5	68,6	69,1	73,3	73,7	73,7
Life expectancy ² (Born in Grl.)	67,3	67,3	67,9	72,9	73,3	73,2

Source: Statistics Greenland, The National Board of Health

1) See <http://bank.stat.gl/SUELDM1>

2) Calculated for 5-year periods. 2014=2010-2014

Summary table 6.2. Life expectancy newborn. Persons born in Greenland

	1977-1981	1982-1986	1987-1991	1992-1996	1997-2001	2002-2006	2010-2014
Males	58,4	58,3	58,9	62,0	62,6	64,9	67,3
Females	67,5	65,9	68,0	68,2	68,4	71,1	73,3

Source: Statistics Greenland, <http://bank.stat.gl/beedt>

Both men and women born in Greenland have shorter life span than those from countries in the Western world. There are two main reasons: Greenland still has a relatively high infant mortality and second high mortality due to accidents and suicides. Deaths due to accident or suicide typically occurs among young men aged 15-35 years. Like deaths among infants these contributes to a significant number of life years lost, far more than the rising number of deaths from cancer and heart disease, which typically occurs later in life.

In Summary table 6.3 the difference between men and women's age-specific mortality rates are shown.

Summary table 6.3. Death pr 1000. Persons born in Greenland

	Males						Females					
	2010	2011	2012	2013	2014	2010-2014	2010	2011	2012	2013	2014	2010-2014
0	0,0	7,7	8,0	5,4	11,0	6,3	5,1	0,0	7,6	7,9	5,3	5,1
1-4	0,7	0,0	0,0	0,7	0,0	0,3	0,7	0,7	0,0	0,0	0,6	0,4
5-9	0,0	0,0	0,5	0,0	0,6	0,2	0,0	0,0	0,5	0,0	0,0	0,1
10-14	0,5	0,5	0,0	1,0	1,1	0,6	1,4	0,5	0,5	0,0	1,0	0,7
15-19	3,6	2,3	1,0	3,5	1,0	2,3	1,8	3,6	2,3	0,9	3,4	2,4
20-24	2,4	1,4	0,9	0,9	3,7	1,9	1,0	2,4	1,3	1,3	0,9	1,4
25-29	0,6	1,1	0,0	0,0	1,0	0,6	0,6	0,6	1,0	0,0	0,0	0,4
30-34	0,7	2,8	2,0	1,3	1,2	1,6	1,6	0,7	2,3	1,7	1,1	1,5
35-39	3,2	3,3	1,7	2,5	2,4	2,6	1,5	3,2	3,5	1,4	2,8	2,5
40-44	2,7	2,0	2,3	2,0	1,5	2,2	0,9	2,8	1,9	2,1	2,4	2,0
45-49	4,8	6,4	2,1	2,6	4,5	4,1	7,2	4,8	6,4	2,0	2,4	4,5
50-54	9,1	2,3	5,3	4,5	3,8	4,9	5,8	9,1	2,1	4,9	4,2	5,0
55-59	10,9	11,3	10,7	5,8	8,2	9,3	18,5	11,0	10,0	10,2	5,2	10,5
60-64	16,1	26,0	17,4	11,8	19,5	18,1	21,5	16,2	24,2	16,6	10,6	17,6
65-69	36,1	36,3	21,7	35,9	35,0	32,9	28,7	36,3	34,3	20,4	33,7	30,6
70-74	38,5	60,7	56,4	40,4	49,8	49,1	41,5	38,5	59,8	57,6	39,7	47,5
75-79	72,1	81,2	72,1	81,6	84,9	78,3	78,2	72,1	83,1	71,0	79,9	76,9
80-84	141,5	140,2	133,3	96,3	163,0	134,6	125,3	141,5	142,5	137,0	100,2	129,0
85-89	259,3	127,0	219,0	242,9	274,5	225,9	103,1	259,3	125,0	215,8	239,4	192,2

Source: Statistics Greenland, <http://bank.stat.gl/beebdm1>

7. Internal migrations

Internal migrations

In Greenland internal migration has a significant impact on the regional population size, sex and age distribution. The impact is much greater than the effect of births and deaths and it affects the composition of the population both the locality of migration and the one of removal.

23,110 domestic movements were recorded in 2014. Most movements were within the same locality.

Summary table 7.1. Internal migrations

	2004	2005	2006	2007	2008	2009	2010	2011	2012	2013	2014
Total	18.739	20.413	20.781	21.766	20.639	21.066	22.313	21.941	21.698	22.701	23.110
same town	11.217	12.250	12.490	13.130	12.040	12.644	13.755	13.200	13.129	14.000	14.322
same settlement	960	1.294	1.271	1.299	1.252	1.112	1.215	1.316	1.191	1.219	1.119
between towns	4.153	4.361	4.428	4.561	4.439	4.548	4.553	4.507	4.440	4.672	4.695
between settlem.	288	279	302	312	406	337	346	370	418	332	345
from settl. to town	1.090	1.115	1.240	1.367	1.323	1.266	1.325	1.392	1.359	1.272	1.403
from town to settl.	950	1.047	999	1.041	1.057	1.096	1.070	1.124	1.079	1.150	1.201
Others	81	67	51	56	122	63	49	32	82	56	25

Source: Statistics Greenland, <http://bank.stat.gl/beebaf2b>

8. Migrations

Migrations

Since the 1970s, net migration has varied greatly from year to year. With few exceptions, emigration generally exceeds immigration. In the early 1990s a significant decline in immigration led to a large net outflow, so great, that the birth rate could not prevent a decline in the total population. From 2005 to 2008 net emigration was markedly higher than in previous years, especially among 'persons born in Greenland'.

Summary table 8.1. Netimmigration by place of birth. 2001-2014

	2004	2005	2006	2007	2008	2009	2010	2011	2012	2013	2014
	Total										
Net immigrations	-236	-448	-644	-566	-639	-189	-160	-159	-709	-447	-585
Immigrations	2482	2514	2404	2417	2536	2551	2491	2283	2191	2066	2148
Emigrations	2718	2962	3048	2983	3175	2740	2651	2442	2900	2513	2733
	Born Greenland										
Net immigrations	-191	-382	-468	-507	-653	-278	-291	-310	-612	-340	-490
Immigrations	923	870	890	886	907	1076	1043	905	871	967	1009
Emigrations	1114	1252	1358	1393	1560	1354	1334	1215	1483	1307	1499
	Born outside Greenland										
Net immigrations	-45	-66	-176	-59	14	89	131	151	-97	-107	-95
Immigrations	1559	1644	1514	1531	1629	1475	1448	1378	1320	1099	1139
Emigrations	1604	1710	1690	1590	1615	1386	1317	1227	1417	1206	1234

Source: Statistics Greenland, <http://bank.stat.gl/beebbiu2>

More than nine of 10 migrations are between Denmark and Greenland. The remaining migrations are primarily to or from the other Scandinavian countries.

9. Population forecast

Population forecast

Population projections provide estimates of the future size, gender and age composition of the population. It is important to stress that population projections are not accurate predictions about the future, but are the result of calculations determined by assumptions about births, deaths and migration. If our assumptions are not met, the actual developments will deviate from the projection.

Our assumption on fertility and mortality are based on experiences from the period 2010 – 2014, while assumptions on migration are based on the latest 10-year period.

Summary table 9.1. Population 2016-2024

	2016	2017	2018	2019	2020	2021	2022	2023	2024
Total	55.857	55.744	55.615	55.480	55.344	55.193	55.040	54.877	54.721
Persons born in Greenland	49.834	49.690	49.546	49.390	49.229	49.072	48.900	48.726	48.533
Persons born outside Greenland	6.023	6.054	6.069	6.090	6.115	6.121	6.140	6.151	6.188

Source: Statistics Greenland, <http://bank.stat.gl/BEEPROG>

I summary table 9.1 and [table 5](#) results from the projections can be seen. For more details – visit <http://bank.stat.gl/BEEPROG> . The forecast is calculated on both ‘persons born in Greenland’ and those ‘born outside Greenland’. The two subpopulations evolve in different directions. The persons born in Greenland, are expected to decrease steadily from 49,975 persons in 2015 to 48,533 persons in 2024. The ‘persons born outside Greenland’ are expected to increase from 6,009 persons in 2015 to 6,188 in 2024. The total population will decrease over the next decade

Population and Population growth

Table 1. Population and Population growth

	Place of birth			Growth by place of birth					
	Total	Greenland	Outside Greenland	Total	Greenland	Outside Greenland			
	Count	Growth		Growth in percent					
1901	11.893	11.621	272
1911	13.459	13.075	384	157	145	112	1,2	1,2	3,5
1921	14.355	14.081	274	90	101	-110	0,6	0,7	-3,3
1930	16.901	16.488	413	283	267	139	1,8	1,8	4,7
1946	21.412	20.939	473	296	292	60	1,6	1,6	0,9
1951	23.642	22.581	1.061	446	328	588	2,0	1,5	17,5
1956	27.101	25.234	1.867	692	531	806	2,8	2,4	12,0
1961	33.140	30.378	2.762	1.208	1.029	895	4,2	4,1	8,2
1962	34.312	31.304	3.008	1.172	926	246	3,5	3,0	8,0
1963	35.499	32.288	3.211	1.187	984	203	3,5	3,1	6,7
1964	36.967	33.406	3.561	1.468	1.118	350	4,1	3,5	10,9
1965	38.815	34.711	4.104	1.848	1.305	543	5,0	3,9	15,2
1966	39.615	35.132	4.483	800	421	379	2,1	1,2	9,2
1967	42.102	36.380	5.722	2.487	1.248	1.239	6,3	3,6	27,6
1968	43.792	37.372	6.420	1.690	992	698	4,0	2,7	12,2
1969	45.639	38.378	7.261	1.847	1.006	841	4,2	2,7	13,1
1970	46.331	38.914	7.417	692	536	156	1,5	1,3	2,1
1971	46.532	38.912	7.620	201	2	203	0,4	0,0	2,7
1972	47.935	39.752	8.183	1.403	840	563	3,0	2,2	2,2
1973	48.581	40.089	8.492	646	337	309	1,3	0,8	3,8
1974	49.468	40.091	9.377	887	2	885	1,8	0,0	10,4
1975	49.502	39.979	9.523	34	-112	146	0,1	-0,3	1,6
1976	49.666	40.390	9.276	164	411	-247	0,3	1,0	-2,6
1977	49.719	40.601	9.118	53	211	-158	0,1	0,5	-1,7
1978	49.148	40.609	8.539	-571	8	-579	-1,1	0,0	-6,4
1979	49.338	40.775	8.563	190	166	24	0,4	0,4	0,3
1980	49.773	40.947	8.826	435	172	263	0,9	0,4	3,1
1981	50.643	41.459	9.184	870	512	358	1,7	1,3	4,1
1982	51.435	42.156	9.279	792	697	95	1,6	1,7	1,0
1983	51.903	42.669	9.234	468	513	-45	0,9	1,2	-0,5
1984	52.347	43.130	9.217	444	461	-17	0,9	1,1	-0,2
1985	52.940	43.587	9.353	593	457	136	1,1	1,1	1,5
1986	53.406	44.053	9.353	466	466	0	0,9	1,1	0,0
1987	53.733	44.430	9.303	327	377	-50	0,6	0,9	-0,5
1988	54.524	44.952	9.572	791	522	269	1,5	1,2	2,9
1989	55.171	45.629	9.542	647	677	-30	1,2	1,5	-0,3
1990	55.558	46.142	9.416	387	513	-126	0,7	1,1	-1,3
1991	55.620	46.778	8.842	62	636	-574	0,1	1,4	-6,1
1992	55.385	47.184	8.201	-235	406	-641	-0,4	0,9	-7,2
1993	55.117	47.558	7.559	-268	374	-642	-0,5	0,8	-7,8
1994	55.419	48.029	7.390	302	471	-169	0,5	1,0	-2,2
1995	55.732	48.412	7.320	313	383	-70	0,6	0,8	-0,9
1996	55.863	48.679	7.184	131	267	-136	0,2	0,6	-1,9
1997	55.971	48.882	7.089	108	203	-95	0,2	0,4	-1,3
1998	56.076	49.117	6.959	105	235	-130	0,2	0,5	-1,8
1999	56.087	49.281	6.806	11	164	-153	0,0	0,3	-2,2
2000	56.124	49.369	6.755	37	88	-51	0,1	0,2	-0,7
2001	56.245	49.623	6.622	121	254	-133	0,2	0,5	-2,0
2002	56.542	49.796	6.746	297	173	124	0,5	0,3	1,9
2003	56.676	49.941	6.735	134	145	-11	0,2	0,3	-0,2
2004	56.854	50.096	6.758	178	155	23	0,3	0,3	0,3
2005	56.969	50.283	6.686	115	187	-72	0,2	0,4	-1,1
2006	56.901	50.397	6.504	-68	114	-182	-0,1	0,2	-2,7
2007	56.648	50.366	6.282	-253	-31	-222	-0,4	-0,1	-3,4

2008	56.462	50.270	6.192	-186	-96	-90	-0,3	-0,2	-1,4
2009	56.194	50.023	6.171	-268	-247	-21	-0,5	-0,5	-0,3
2010	56.452	50.226	6.226	258	203	55	0,5	0,4	0,9
2011	56.615	50.321	6.294	163	95	68	0,3	0,2	1,1
2012	56.749	50.340	6.409	134	19	115	0,2	0,4	1,8
2013	56.370	50.101	6.269	-379	-239	-140	-0,7	-0,5	-2,2
2014	56.282	50.157	6.125	-88	56	-144	-0,2	0,1	-2,4
2015	55.984	49.975	6.009	-298	-182	-116	-0,5	-0,4	-1,9

<http://bank.stat.gl/beesat1>

Notes:

1) 1901-30: "Natives". 1945-51: "Persons under greenlandic jurisdiction".

2) Northgreenland, in 1930 271 persons, all of whom born in Greenland.

3) The large fluctuations in growth was due to technical issues at registration

4) Includes from 1966 and onward the civil part of Kangerlussuaq (Sdr. Strømfjord). 579 persons were added, all except 5 born outside Greenland.

Source: Statsministeriets Grønlandsafdeling, Statistics Denmark and Statistics Greenland

Source: Statsministeriets Grønlandsafdeling, Danmarks Statistik og Grønlands Statistik

Vital statistics

Table 2. Vital Statistics

	Liveborn		Death		Birth-surplus	Net immigration (incl. corrections)			Growth Total
	Mother born in Greenland	Total	Born in Greenland	Total		Born in Greenland	Born outside Greenland	Total	
1950	1.110	1.129	537	539	590	-113	122	9	599
1951	973	999	548	550	449	-142	210	68	517
1952	996	1.034	473	475	559	-96	141	45	604
1953	1.058	1.109	392	398	711	-213	41	-172	539
1954	1.103	1.136	384	388	748	-113	255	142	890
1955	1.179	1.234	371	375	859	-127	177	50	909
1956	1.235	1.293	347	351	942	-3	258	255	1.197
1957	1.303	1.361	329	337	1.024	37	165	202	1.226
1958	1.335	1.410	284	290	1.120	-201	178	-23	1.097
1959	1.412	1.491	278	285	1.206	-181	209	28	1.234
1960	1.496	1.586	247	256	1.330	-164	119	-45	1.285
1961	1.548	1.644	284	292	1.352	-338	158	-180	1.172
1962	1.489	1.610	344	361	1.249	-161	99	-62	1.187
1963	1.560	1.671	270	279	1.392	-172	248	76	1.468
1964	1.674	1.797	321	329	1.468	-48	428	380	1.848
1965	1.596	1.738	327	337	1.401	-848	247	-601	800
1966	1.608	1.781	318	329	1.452	-42	1.077	1.035	2.487
1967	1.507	1.685	305	314	1.371	-210	529	319	1.690
1968	1.418	1.576	319	333	1.243	-93	697	604	1.847
1969	1.151	1.310	293	311	999	-322	15	-307	692
1970	999	1.144	268	283	861	-733	73	-660	201
1971	851	1.028	268	289	739	257	407	664	1.403
1972	770	948	281	295	653	-152	145	-7	646
1973	706	940	320	339	601	-384	670	286	887
1974	638	866	312	332	534	-438	-62	-500	34
1975	671	815	299	313	502	39	-430	-391	164
1976	715	859	327	348	511	-177	-281	-458	53
1977	783	918	307	373	545	-468	-667	-1.135	-571
1978	717	870	295	309	561	-256	-110	-366	190
1979	794	900	375	393	507	-247	185	-62	435
1980	913	1.034	362	380	654	-39	264	225	870
1981	931	1.056	357	381	675	123	1	124	792
1982	952	1.052	386	408	644	-53	-120	-173	468
1983	890	994	407	433	561	-22	-85	-107	444
1984	916	1.054	407	439	615	-52	30	-22	593
1985	1.032	1.152	415	435	717	-151	-87	-238	466
1986	952	1.055	420	445	610	-155	-142	-297	327
1987	999	1.104	418	445	659	-59	205	146	791
1988	1.104	1.213	413	432	781	-14	-118	-132	647
1989	1.107	1.210	429	455	755	-165	-203	-368	387
1990	1.144	1.258	434	467	791	-74	-655	-729	62
1991	1.102	1.192	409	458	734	.	.	-969	-235
1992	1.124	1.237	420	441	796	-330	-734	-1.064	-268
1993	1.098	1.180	416	432	748	-333	-194	-527	302
1994	1.025	1.139	415	445	694	-308	-46	-354	313
1995	1.012	1.101	453	480	621	-366	-100	-466	131
1996	956	1.051	411	444	607	-419	-64	-483	108
1997	1.023	1.095	466	492	603	-373	-28	-401	105
1998	901	980	434	457	523	-419	-96	-515	-52
1999	880	945	443	479	466	-290	-26	-316	83
2000	807	879	429	450	429	-158	-47	-205	138
2001	856	942	434	466	476	-234	-13	-247	297
2002	877	954	417	446	508	-357	69	-288	134
2003	786	879	388	411	468	-315	-30	-345	178
2004	809	892	440	479	413	-191	-45	-236	115

2005	794	886	446	465	421	-382	-66	-448	-68
2006	772	842	409	440	402	-468	-176	-644	-253
2007	755	853	429	452	401	-507	-59	-566	-186
2008	763	834	401	428	406	-653	14	-639	-268
2009	816	895	417	444	451	-278	89	-189	258
2010	774	869	471	504	365	-291	131	-160	163
2011	747	821	440	470	351	-310	151	-159	134
2012	732	790	429	459	331	-612	-97	-709	-379
2013	761	820	418	444	376	-340	-107	-447	-88
2014	737	805	429	461	344	-490	-95	-585	-298

Source: Statistics Greenland (<http://bank.stat.gl/beesat2>)

Notes:

1) The large fluctuations in growth is caused by technical issues at registration.

Source: Statsministeriets Grønlandsafdeling, Statistics Denmark and Statistics Greenland

Population in municipalities, districts, towns and settlements 2015

Table 3. Population in municipalities, districts, towns and settlements 2015

	0-6	7-16	17-24	25-64	65+	l alt
Total	5.509	7.784	7.050	31.370	4.271	55.984
Towns	4.718	6.569	6.070	27.201	3.658	48.216
Settlements ++	791	1.215	980	4.169	613	7.768
	Municipal.					
Kommune Kujalleq	664	927	895	3.720	764	6.970
Towns	569	799	799	3.160	625	5.952
Settlements ++	95	128	96	560	139	1.018
Kommuneqarfik Sermersooq	2.207	3.052	2.590	13.207	1.261	22.317
Towns	2.050	2.824	2.437	12.538	1.158	21.007
Settlements ++	157	228	153	669	103	1.310
Qeqqata Kommunia	916	1.335	1.270	5.107	769	9.397
Towns	786	1.147	1.111	4.329	700	8.073
Settlements ++	130	188	159	778	69	1.324
Qaasuitsup Kommunia	1.722	2.470	2.287	9.219	1.470	17.168
Towns	1.313	1.799	1.723	7.174	1.175	13.184
Settlements ++	409	671	564	2.045	295	3.984
Outside Municipalities	-	-	8	117	7	132
Towns	-	-	-	-	-	-
Settlements ++	-	-	8	117	7	132
	Districts					
Nanortalik	158	260	195	964	227	1.804
Town	109	179	151	672	150	1.261
Settlements ++	49	81	44	292	77	543
Qaqortoq	330	420	503	1.785	311	3.349
Town	313	402	480	1.692	277	3.164
Settlements ++	17	18	23	93	34	185
Narsaq	176	247	197	971	226	1.817
Town	147	218	168	796	198	1.527
Settlements ++	29	29	29	175	28	290
Ivittuut	-	-	-	3	-	3
Town	-	-	-	-	-	-
Settlements ++	-	-	-	3	-	3
Paamiut	148	228	180	853	182	1.591
Town	144	217	171	797	167	1.496
Settlements ++	4	11	9	56	15	95
Nuuk	1.604	2.177	1.965	10.614	899	17.259
Town	1.580	2.154	1.929	10.460	869	16.992
Settlements ++	24	23	36	154	30	267
Maniitsoq	289	413	341	1.742	317	3.102
Town	235	334	263	1.409	260	2.501
Settlements ++	54	79	78	333	57	601
Sisimiut	627	922	929	3.365	452	6.295
Town	551	813	848	2.920	440	5.572
Settlements ++	76	109	81	445	12	723
Kangaatsiaq	108	225	156	611	79	1.179
Town	53	99	60	285	35	532
Settlements ++	55	126	96	326	44	647
Aasiaat	320	361	581	1.688	307	3.257
Town	305	341	562	1.604	286	3.098
Settlements ++	15	20	19	84	21	159
Qasigiannuit	126	165	143	659	140	1.233
Town	120	150	138	626	131	1.165

Settlements ++	6	15	5	33	9	68
Ilulissat	491	683	523	2.772	397	4.866
Town	456	633	482	2.555	365	4.491
Settlements ++	35	50	41	217	32	375
Qeqertarsuaq	66	119	102	475	130	892
Town	64	117	101	463	126	871
Settlements ++	2	2	1	12	4	21
Uummannaq	199	315	293	1.190	182	2.179
Town	108	194	161	688	95	1.246
Settlements ++	91	121	132	502	87	933
Upernavik	323	486	392	1.415	181	2.797
Town	125	170	144	608	93	1.140
Settlements ++	198	316	248	807	88	1.657
Qaanaaq	89	116	97	409	54	765
Town	82	95	75	345	44	641
Settlements ++	7	21	22	64	10	124
Tasiilaq	393	585	385	1.518	152	3.033
Town	264	391	277	1.067	94	2.093
Settlements ++	129	194	108	451	58	940
Ittoqqortoormiit	62	62	60	219	28	431
Town	62	62	60	214	28	426
Settlements ++	-	-	-	5	-	5

<http://bank.stat.gl/beest3>

Source: Statistics Greenland

Population by age, gender, place of birth and marital status 2015

Table 4. Population by age, gender, place of birth and marital status 2015

	Males						Females				
	Total	Total	Unmarried	Married	Divorced	Widowed	Total	Unmarried	Married	Divorced	Widowed
Population											
Total	55.984	29.556	19.509	7.518	1.947	582	26.428	16.026	7.298	1.764	1.340
0-4	3.898	2.026	2.026	-	-	-	1.872	1.872	-	-	-
5-9	3.958	2.045	2.045	-	-	-	1.913	1.913	-	-	-
10-14	4.026	2.049	2.049	-	-	-	1.977	1.977	-	-	-
15-19	3.964	1.966	1.966	-	-	-	1.998	1.996	2	-	-
20-24	4.497	2.300	2.260	37	3	-	2.197	2.071	122	3	1
25-29	4.386	2.212	1.967	225	19	1	2.174	1.759	364	44	7
30-34	3.980	2.045	1.532	448	63	2	1.935	1.172	643	113	7
35-39	3.197	1.715	990	595	127	3	1.482	607	692	169	14
40-44	3.204	1.775	839	713	215	8	1.429	481	746	178	24
45-49	5.047	2.713	1.168	1.171	353	21	2.334	708	1.202	364	60
50-54	4.983	2.689	994	1.302	358	35	2.294	591	1.276	343	84
55-59	3.824	2.175	712	1.112	317	34	1.649	390	918	208	133
60-64	2.749	1.566	478	787	229	72	1.183	248	638	155	142
65-69	1.711	1.025	268	512	139	106	686	95	323	82	186
70-74	1.364	727	153	390	79	105	637	73	250	60	254
75-79	655	310	42	157	31	80	345	43	92	34	176
80-84	375	156	17	50	9	80	219	21	24	9	165
85-89	138	50	2	16	5	27	88	8	6	2	72
90-94	22	10	-	3	-	7	12	-	-	-	12
95+	6	2	1	-	-	1	4	1	-	-	3
Born Greenland											
Total	49.975	25.605	17.574	5.997	1.531	503	24.370	14.913	6.548	1.608	1.301
0-4	3.709	1.929	1.929	-	-	-	1.780	1.780	-	-	-
5-9	3.717	1.922	1.922	-	-	-	1.795	1.795	-	-	-
10-14	3.814	1.949	1.949	-	-	-	1.865	1.865	-	-	-
15-19	3.847	1.908	1.908	-	-	-	1.939	1.937	2	-	-
20-24	4.309	2.191	2.154	34	3	-	2.118	1.999	115	3	1
25-29	3.910	1.977	1.769	190	17	1	1.933	1.563	324	40	6
30-34	3.370	1.714	1.294	363	56	1	1.656	997	549	104	6
35-39	2.593	1.325	775	445	102	3	1.268	527	569	159	13
40-44	2.580	1.349	640	520	183	6	1.231	414	638	157	22
45-49	4.445	2.278	985	971	304	18	2.167	663	1.103	342	59
50-54	4.389	2.249	865	1.056	295	33	2.140	554	1.186	318	82
55-59	3.262	1.764	602	903	234	25	1.498	363	825	182	128
60-64	2.297	1.236	398	617	164	57	1.061	224	576	132	129
65-69	1.427	780	213	380	93	94	647	89	305	71	182
70-74	1.199	583	124	318	52	89	616	71	240	57	248
75-79	596	258	29	138	21	70	338	43	87	33	175
80-84	355	138	15	45	5	73	217	21	23	8	165
85-89	130	45	2	15	2	26	85	7	6	2	70
90-94	20	8	-	2	-	6	12	-	-	-	12
95+	6	2	1	-	-	1	4	1	-	-	3
Born outside Greenland											
Total	6.009	3.951	1.935	1.521	416	79	2.058	1.113	750	156	39
0-4	189	97	97	-	-	-	92	92	-	-	-
5-9	241	123	123	-	-	-	118	118	-	-	-
10-14	212	100	100	-	-	-	112	112	-	-	-
15-19	117	58	58	-	-	-	59	59	-	-	-
20-24	188	109	106	3	-	-	79	72	7	-	-

25-29	476	235	198	35	2	-	241	196	40	4	1
30-34	610	331	238	85	7	1	279	175	94	9	1
35-39	604	390	215	150	25	-	214	80	123	10	1
40-44	624	426	199	193	32	2	198	67	108	21	2
45-49	602	435	183	200	49	3	167	45	99	22	1
50-54	594	440	129	246	63	2	154	37	90	25	2
55-59	562	411	110	209	83	9	151	27	93	26	5
60-64	452	330	80	170	65	15	122	24	62	23	13
65-69	284	245	55	132	46	12	39	6	18	11	4
70-74	165	144	29	72	27	16	21	2	10	3	6
75-79	59	52	13	19	10	10	7	-	5	1	1
80-84	20	18	2	5	4	7	2	-	1	1	-
85-89	8	5	-	1	3	1	3	1	-	-	2
90-94	2	2	-	1	-	1	-	-	-	-	-
95+	-	-	-	-	-	-	-	-	-	-	-

<http://bank.stat.gl/beest5>

Notes: 1) Separated has counted as married

Source: Statistics Greenland

Population 2015-2024

Table 5. Population 2015-2024

	2015	2016	2017	2018	2019	2020	2021	2022	2023	2024
Total										
Total	55.984	55.857	55.744	55.615	55.480	55.344	55.193	55.040	54.877	54.721
0-6	5.509	5.548	5.535	5.534	5.577	5.629	5.639	5.624	5.564	5.500
7-16	7.784	7.886	7.908	7.888	7.801	7.677	7.641	7.626	7.638	7.671
17-24	7.050	6.655	6.455	6.283	6.143	6.072	5.969	5.909	5.826	5.869
25-64	31.370	31.383	31.399	31.399	31.360	31.251	31.108	30.918	30.757	30.430
65+	4.271	4.385	4.447	4.511	4.599	4.715	4.836	4.963	5.092	5.251
Born in Greenland										
Total	49.975	49.834	49.690	49.546	49.390	49.229	49.072	48.900	48.726	48.533
0-6	5.226	5.229	5.184	5.166	5.178	5.204	5.182	5.172	5.122	5.064
7-16	7.389	7.440	7.392	7.322	7.203	7.044	6.999	6.926	6.890	6.883
17-24	6.781	6.417	6.256	6.083	5.939	5.865	5.731	5.643	5.524	5.531
25-64	26.846	26.861	26.870	26.874	26.840	26.743	26.614	26.427	26.260	25.901
65+	3.733	3.887	3.988	4.101	4.230	4.373	4.546	4.732	4.930	5.154
Born outside Greenland										
Total	6.009	6.023	6.054	6.069	6.090	6.115	6.121	6.140	6.151	6.188
0-6	283	319	351	368	399	425	457	452	442	436
7-16	395	446	516	566	598	633	642	700	748	788
17-24	269	238	199	200	204	207	238	266	302	338
25-64	4.524	4.522	4.529	4.525	4.520	4.508	4.494	4.491	4.497	4.529
65+	538	498	459	410	369	342	290	231	162	97

<http://bank.stat.gl/BEEP2012>

Source: Statistics Greenland

Life tables

Table 6. Life tables

	Male			Female			Male			Female		
	Survivors	Mortality	Life expectancy	Survivors	Mortality	Life expectancy	Survivors	Mortality	Life expectancy	Survivors	Mortality	Life expectancy
	1985-1989						1990-1994					
0	10.000	0,0245	61,0	10.000	0,0215	68,5	10.000	0,0252	62,0	10.000	0,0247	68,5
1	9755	0,0161	61,6	9785	0,0129	69,0	9748	0,0168	62,64	9753	0,0163	69,2
5	9497	0,0016	59,2	9580	0,0011	66,4	9508	0,0013	60,16	9529	0,0004	66,8
10	9428	0,0015	54,6	9545	0,0003	61,6	9456	0,0006	55,47	9499	0,0002	62,0
15	9383	0,0025	49,8	9540	0,0005	56,7	9427	0,0019	50,63	9485	0,0006	57,1
20	9219	0,0084	45,6	9475	0,0011	52,0	9201	0,0072	46,78	9410	0,0023	52,5
25	8868	0,0063	42,3	9394	0,0023	47,4	8879	0,0052	43,34	9342	0,0018	47,9
30	8603	0,0042	38,5	9279	0,0029	43,0	8675	0,0058	39,28	9270	0,0024	43,2
35	8424	0,0023	34,2	9167	0,0019	38,5	8472	0,0042	35,14	9202	0,0021	38,5
40	8252	0,0037	29,9	9052	0,0027	33,9	8292	0,0061	30,83	9103	0,0031	33,9
45	8048	0,0074	25,5	8875	0,0035	29,5	8076	0,0075	26,56	8922	0,0049	29,5
50	7730	0,0110	21,4	8656	0,0108	25,2	7843	0,0093	22,25	8661	0,0061	25,3
55	7194	0,0229	17,8	8215	0,0094	21,3	7395	0,0128	18,37	8348	0,0102	21,1
60	6437	0,0277	14,4	7553	0,0191	17,8	6867	0,0243	14,5	7823	0,0182	17,3
65	5337	0,0390	11,7	6770	0,0353	14,5	5915	0,0409	11,25	7002	0,0337	13,9
70	4016	0,0718	9,3	5695	0,0312	11,5	4594	0,0715	8,45	5673	0,0518	11,3
75	2728	0,0731	7,0	4471	0,0735	8,7	2892	0,1082	6,38	4432	0,0648	8,5
80	1460	0,1909	5,0	3040	0,1035	6,2	1265	0,1657	5,02	2876	0,1280	6,2
85	489	0,2340	3,6	1527	0,1827	3,9	407	0,2254	3,59	1329	0,1939	4,5
	1995-1999						2000-2004					
0	10.000	0,0198	63,1	10.000	0,0196	68,6	10.000	0,0142	65,5	10.000	0,0095	71,0
1	9802	0,011	63,4	9804	0,0117	69,0	9858	0,0088	65,4	9905	0,0065	70,7
5	9644	0,0014	60,4	9648	0,0004	66,1	9713	0,0012	62,4	9817	0,0002	67,3
10	9596	0,0008	55,7	9632	0,0002	61,2	9685	0,0006	57,5	9802	0,0002	62,4
15	9543	0,0025	51,0	9624	0,0017	56,2	9647	0,0021	52,7	9779	0,0013	57,5
20	9326	0,0075	47,1	9544	0,0018	51,7	9482	0,0071	48,6	9695	0,0023	53,0
25	9031	0,0049	43,5	9461	0,0011	47,1	9163	0,0047	45,2	9608	0,0026	48,4
30	8814	0,0005	39,5	9391	0,0013	42,4	9003	0,0024	40,9	9510	0,0015	43,9
35	8631	0,0042	35,2	9318	0,0016	37,7	8883	0,0039	36,4	9426	0,0018	39,3
40	8439	0,0047	31,0	9199	0,0040	33,1	8740	0,0034	32,0	9333	0,0017	34,6
45	8207	0,0057	26,7	9025	0,0035	28,7	8556	0,0045	27,6	9229	0,0021	30,0
50	7998	0,0055	22,3	8801	0,0087	24,4	8285	0,0077	23,3	9039	0,0082	25,5
55	7609	0,0109	18,3	8406	0,0104	20,3	7945	0,0092	19,2	8641	0,0096	21,5
60	6995	0,0265	14,6	7753	0,0169	16,7	7415	0,0218	15,3	8157	0,0091	17,6
65	6024	0,0409	11,3	6923	0,0281	13,3	6501	0,0365	11,9	7393	0,0275	14,0
70	4719	0,0728	8,5	5752	0,0533	10,3	5182	0,0585	9,1	6311	0,0395	10,8
75	2957	0,1128	6,5	4123	0,0863	7,9	3524	0,0971	6,6	4853	0,0701	8,0
80	1373	0,1825	5,0	2448	0,1314	6,0	1616	0,1712	5,3	2808	0,1289	6,2
85	455	0,3643	3,4	1007	0,1928	4,7	505	0,316	4,1	1236	0,2071	4,7
	2005-2009						2010-2014					
0	10.000	0,0108	67,9	10.000	0,0096	72,2	10.000	0,0103	69,1	10.000	0,0056	73,7
1	9892	0,0068	67,6	9904	0,0055	71,9	9897	0,0061	68,8	9944	0,0028	73,1
5	9796	0,0014	64,3	9816	0,0012	68,5	9816	0,0005	65,4	9906	0,0000	69,3
10	9749	0,0004	59,6	9791	0,0000	63,7	9809	0,0000	60,4	9901	0,0007	64,4
15	9722	0,0012	54,7	9767	0,0019	58,8	9800	0,0007	55,5	9875	0,0012	59,5
20	9606	0,0039	50,3	9666	0,0011	54,4	9683	0,0050	51,1	9802	0,0034	54,9
25	9394	0,0040	46,4	9603	0,0008	49,7	9446	0,0039	47,3	9690	0,0007	50,5
30	9233	0,0033	42,2	9557	0,0009	44,9	9309	0,0032	42,9	9657	0,0003	45,7
35	9111	0,0033	37,7	9499	0,0031	40,2	9178	0,0025	38,5	9615	0,0026	40,9

40	8963	0,0040	33,2	9422	0,0021	35,5	9048	0,0026	34,0	9490	0,0020	36,4
45	8799	0,0033	28,8	9319	0,0033	30,9	8873	0,0036	29,6	9406	0,0026	31,7
50	8612	0,0054	24,3	9119	0,0061	26,4	8648	0,0051	25,3	9245	0,0052	27,2
55	8331	0,0087	20,0	8816	0,0101	22,2	8370	0,0088	21,0	9042	0,0068	22,7
60	7807	0,0175	16,1	8272	0,0167	18,5	7873	0,0193	17,1	8672	0,0112	18,5
65	7073	0,0273	12,4	7643	0,0227	14,7	7151	0,0255	13,4	7949	0,0216	14,8
70	5767	0,0570	9,4	6448	0,0397	11,7	6075	0,0453	10,2	6851	0,0349	11,7
75	4058	0,1023	6,9	5018	0,0537	9,0	4356	0,0855	7,8	5434	0,0683	8,8
80	2131	0,1654	5,0	3372	0,1087	6,6	2458	0,1580	6,0	3678	0,1016	6,3
85	703	0,1969	3,5	1638	0,1995	5,0	1010	0,2596	4,7	1767	0,1909	4,5

<http://bank.stat.gl/beebbd2>

Note.: Survivors refers to the lowest birthday in stub. For example, there would be 9,722 in 1986-1990 one-year-old boys of a generation of 10.000. The deathrate indicates the 10,000-share of the risk of dying between the two birthdays in the stub. Life expectancy is the average of the residual lifetimes, there will be claimed by a group, who die according to the life table.

Source: Statistics Greenland

Liveborn children by mothers age

Table 7. Liveborn children by mothers age

		1980	1985	1990	1995	2000	2005	2010	2014
		Liveborn							
Total		1.034	1.152	1.258	1.101	879	886	869	806
	15-19	203	213	123	120	150	147	84	92
	20-24	314	409	446	250	241	277	214	238
	25-29	304	288	404	365	196	193	273	247
	30-34	135	176	198	266	192	147	170	169
	35-39	57	51	76	81	89	100	52	63
	40-44	17	13	11	18	10	19	13	11
	45+	1	2	-	-	1	2	-	-
By Mothers born in Greenland		913	1.033	1.144	1.012	807	794	774	738
	15-19	201	208	118	115	148	142	83	92
	20-24	291	393	425	242	224	268	211	226
	25-29	253	229	366	328	171	157	254	231
	30-34	105	152	163	238	168	115	142	134
	35-39	45	39	64	72	85	92	39	53
	40-44	14	10	8	16	10	18	9	10
	45+	1	2	-	-	1	1	0	-
		Meanpopulation							
Total	15-19	3.063	2.831	1.684	1.694	1.912	2.243	2.262	2.019
	20-24	2.417	3.095	2.790	1.583	1.631	1.919	2.187	2.211
	25-29	2.012	2.514	3.095	2.733	1.557	1.641	1.905	2.128
	30-34	1.567	1.988	2.457	2.909	2.613	1.587	1.611	1.910
	35-39	1.512	1.497	1.833	2.205	2.728	2.497	1.462	1.447
	40-44	1.104	1.400	1.387	1.671	2.041	2.598	2.335	1.502
	45+	1.029	1.057	1.330	1.253	1.574	1.936	2.456	2.405
Women born in Greenland	15-19	2.918	2.667	1.508	1.550	1.834	2.156	2.199	1.962
	20-24	2.193	2.881	2.576	1.430	1.488	1.816	2.077	2.130
	25-29	1.614	2.170	2.770	2.467	1.344	1.390	1.702	1.898
	30-34	1.159	1.603	2.109	2.633	2.370	1.310	1.337	1.633
	35-39	1.194	1.146	1.540	1.968	2.522	2.282	1.246	1.231
	40-44	969	1.137	1.114	1.460	1.841	2.426	2.172	1.304
	45+	929	934	1.098	1.049	1.382	1.753	2.290	2.237
		Fertility							
Total	Total fertility	2.438	2.279	2.467	2.506	2.319	2.343	2.252	2.002
	15-19	66	75	73	71	78	66	52	42
	20-24	130	132	160	158	148	144	113	97
	25-29	151	115	131	134	126	118	138	128
	30-34	86	89	81	91	73	93	86	89
	35-39	38	34	41	37	33	40	49	36
	40-44	15	9	8	11	5	7	11	9
	45+	1	2	-	-	1	1	-	-
Women born in Greenland	Total fertility	2.511	2.299	2.507	2.572	2.346	2.313	2.189	2.275
	15-19	69	78	78	74	81	66	53	39
	20-24	133	136	165	169	151	148	113	111
	25-29	157	106	132	133	127	113	140	156
	30-34	91	95	77	90	71	88	78	115
	35-39	38	34	42	37	34	40	43	30
	40-44	14	9	7	11	5	7	10	4
	45+	1	2	-	-	1	1	-	-

<http://bank.stat.gl/beebblm1>

Source: Statistics Greenland

Migrations by place of birth

Table 8. Migrations by place of birth

	Immigrations			Emigrations		
	Total	Born in Greenland	Born outside Greenland	Total	Born in Greenland	Born outside Greenland
1993	2.091	466	1.625	2.618	799	1.819
1994	2.119	472	1.647	2.473	780	1.693
1995	2.236	532	1.704	2.702	898	1.804
1996	2.414	662	1.752	2.897	1.081	1.816
1997	2.579	740	1.839	2.980	1.113	1.867
1998	2.419	735	1.684	2.934	1.154	1.780
1999	2.488	803	1.685	2.804	1.093	1.711
2000	2.794	978	1.816	2.888	1.127	1.761
2001	2.461	804	1.657	2.708	1.038	1.670
2002	2.126	624	1.502	2.414	981	1.433
2003	2.388	826	1.562	2.733	1.141	1.592
2004	2.482	923	1.559	2.718	1.114	1.604
2005	2.514	870	1.644	2.962	1.252	1.710
2006	2.404	890	1.514	3.048	1.358	1.690
2007	2.417	886	1.531	2.983	1.393	1.590
2008	2.536	907	1.629	3.175	1.560	1.615
2009	2.551	1.076	1.475	2.740	1.354	1.386
2010	2.491	1.043	1.448	2.651	1.334	1.317
2011	2.283	905	1.378	2.442	1.215	1.227
2012	2.191	871	1.320	2.900	1.483	1.417
2013	2.066	967	1.099	2.513	1.307	1.206
2014	2.148	1.009	1.139	2.733	1.499	1.234

<http://bank.stat.gl/beebbiu2>

Source: Statistics Greenland

Population by citizenship. Selected years 1980-2015

Table 9. Population by citizenship. Selected years 1980-2015

Citizenship	1980	1985	1990	1995	2000	2005	2010	2015
Total	49.785	52.955	55.567	55.732	56.110	56.972	56.452	55.984
Denmark	49.400	52.501	55.129	55.418	55.602	56.442	55.716	55.009
Finland	15	7	9	4	10	5	8	11
Iceland	15	21	26	34	115	100	94	172
Norway	129	138	116	66	84	48	61	64
Sweden	108	144	145	63	100	86	92	79
Estonia	-	-	-	-	3	3	-	-
Latvia	-	-	-	-	-	-	-	2
Lithuania	-	-	-	-	1	1	7	3
Belgium	-	-	2	1	2	3	4	3
Cyprus	-	-	1	-	1	1	-	-
France	13	10	8	9	10	11	13	11
Greece	-	-	1	-	-	-	-	-
Netherlands	2	4	2	4	5	4	8	11
Ireland	1	-	1	3	-	3	2	3
Italy	1	3	2	2	6	7	5	8
Luxembourg	-	-	-	-	-	-	-	-
Malta	-	-	-	-	-	-	-	-
Poland	-	-	4	-	3	2	24	29
Portugal	-	-	1	1	-	-	-	-
Slovakia	-	-	-	-	-	-	6	6
Slovenia	-	-	-	-	-	-	-	-
Croatia	-	-	-	-	-	-	1	1
Spain	1	3	4	3	1	-	2	6
Great Britain	-	-	34	22	20	12	22	16
Czech Republic	-	-	-	-	1	2	1	-
Czechoslovakia (former)	-	2	3	-	-	-	-	-
Germany	28	24	20	20	24	46	61	53
East Germany (former)	-	-	-	-	-	-	-	-
Hungary	3	-	1	-	-	-	-	-
Austria	5	1	-	-	1	-	3	5
Switzerland	2	4	4	2	3	8	7	2
Bulgaria	-	-	-	3	7	10	16	22
Romania	-	-	-	-	1	9	11	16
Turkey	-	1	1	-	-	-	2	1
Russia	-	-	-	-	13	18	3	5
Soviet Union (former)	-	-	-	-	-	1	1	-
Belarus	-	-	-	-	-	-	-	-
Ukraine	-	-	-	1	-	-	-	-
Other Europe	2	1	2	2	2	1	1	1
USA	16	31	22	23	19	18	29	36
Canada	3	12	4	14	8	20	13	14
Other America	1	-	3	6	9	6	13	18
Ethiopia	-	-	-	-	-	-	-	-
Morocco	-	-	-	-	-	1	1	4
Somalia	-	-	-	-	-	-	-	-
Other Africa	-	1	2	1	3	1	9	12
Afghanistan	-	-	-	-	-	-	-	-
Bangladesh	-	-	-	-	-	-	1	-
Philippines	-	-	-	6	5	10	51	157
India	-	1	1	1	4	5	1	-
Iraq	-	-	-	-	-	-	-	-
Iran	-	1	4	-	2	-	1	1
Japan	1	1	2	2	3	2	6	3
China	-	-	-	-	-	5	6	11

Lebanon	-	-	1	-	-	-	-	-
Pakistan	-	-	-	-	1	1	2	2
Sri Lanka	-	-	-	1	-	2	1	1
Syria	-	-	-	-	-	-	-	-
Thailand	-	3	6	14	37	63	131	166
Vietnam	-	-	-	-	-	-	-	-
Other Asia	-	-	3	2	3	9	12	12
Oceania	-	-	-	2	1	5	4	4
Stateless	-	-	1	-	-	-	-	-
Unknown	39	41	2	2	-	1	-	4

<http://bank.stat.gl/beest6>

Source: Statistics Greenland

Signatur forklaring:

- ... Oplysninger foreligger ikke
- .. Oplysninger for usikre til at angives eller diskretionshensyn
- . Tal kan efter sagens natur ikke forekomme
- 0 Mindre end halvdelen af den anvendte enhed
- Nul
- * Foreløbigt eller anslået tal

Eventuel henvendelse

Lars Pedersen

E-mail: LARP@stat.gl

2015 statistical yearbook

Grønlands Statistik
 Postboks 1025 · 3900 Nuuk
 Tlf.: +299 34 57 70 · Fax: +299 34 57 90
 www.stat.gl · e-mail: stat@stat.gl

